



**SQ-OMR SHEET**

Name of Head of the School : \_\_\_\_\_

School Name & Address : \_\_\_\_\_

UDISE School Code	Total Sections in Class X	Total Enrollment in all Section in Class X	Enrollment in Selected Section	Absenties in Selected Section
<input type="text"/>	<input type="text"/>	<input type="text"/>	<input type="text"/>	<input type="text"/>
0 0 0 0 0 0 0 0 0 0 0 0	0 0	0 0 0	0 0 0	0 0
1 1 1 1 1 1 1 1 1 1 1 1	1 1	1 1 1	1 1 1	1 1
2 2 2 2 2 2 2 2 2 2 2 2	2 2	2 2 2	2 2 2	2 2
3 3 3 3 3 3 3 3 3 3 3 3	3 3	3 3 3	3 3 3	3 3
4 4 4 4 4 4 4 4 4 4 4 4	4 4	4 4 4	4 4 4	4 4
5 5 5 5 5 5 5 5 5 5 5 5	5 5	5 5 5	5 5 5	5 5
6 6 6 6 6 6 6 6 6 6 6 6	6 6	6 6 6	6 6 6	6 6
7 7 7 7 7 7 7 7 7 7 7 7	7 7	7 7 7	7 7 7	7 7
8 8 8 8 8 8 8 8 8 8 8 8	8 8	8 8 8	8 8 8	8 8
9 9 9 9 9 9 9 9 9 9 9 9	9 9	9 9 9	9 9 9	9 9

**INSTRUCTIONS**

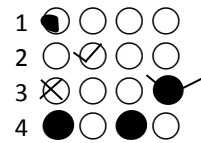
- USE ONLY BLACK OR BLUE BALL POINT PEN
- There is only one correct answer for each question. While marking your answer, darken the circle which is a correct answer, as shown in the example below:
- Please do not overwrite because it will be treated as wrong answer.
- Please **DO NOT FOLD / TEAR OMR SHEET.**

**Correct way of marking the answer**



Darken the circle completely and accurately as shown in the figure.

**Wrong way of marking the answer**



Q.No.	Responses
1	(1) (2)
2	(1) (2) (3)
3	(1) (2) (3)
4a	(1) (2)
4b	(1) (2)
4c	(1) (2)
4d	(1) (2)
4e	(1) (2)
5a	(1) (2)
5b	(1) (2)
5c	(1) (2)
5d	(1) (2)
5e	(1) (2)
5f	(1) (2)
5g	(1) (2)
5h	(1) (2)

Q.No.	Responses
6a	(1) (2)
6b	(1) (2)
6c	(1) (2)
6d	(1) (2)
6e	(1) (2)
6f	(1) (2)
6g	(1) (2)
6h	(1) (2)
6i	(1) (2)
6j	(1) (2)
7a	(1) (2) (3)
7b	(1) (2) (3)
7c	(1) (2) (3)
7d	(1) (2) (3)
7e	(1) (2) (3)
7f	(1) (2) (3)
7g	(1) (2) (3)
7h	(1) (2) (3)
7i	(1) (2) (3)
7j	(1) (2) (3)
7k	(1) (2) (3)

Q.No.	Responses
8a	(1) (2) (3)
8b	(1) (2) (3)
8c	(1) (2) (3)
8d	(1) (2) (3)
8e	(1) (2) (3)
8f	(1) (2) (3)
8g	(1) (2) (3)
8h	(1) (2) (3)
8i	(1) (2) (3)
8j	(1) (2) (3)
8k	(1) (2) (3)
9a	(1) (2)
9b	(1) (2)
9c	(1) (2)
9d	(1) (2)

Q.No.	Responses
10a	(1) (2) (3)
10b	(1) (2) (3)
10c	(1) (2) (3)
10d	(1) (2) (3)
10e	(1) (2) (3)
10f	(1) (2) (3)
10g	(1) (2) (3)
10h	(1) (2) (3)
10i	(1) (2) (3)
10j	(1) (2) (3)

Signature of FI