



# ACCESSIBLE INDIA CAMPAIGN

## Priya: The Accessibility Warrior

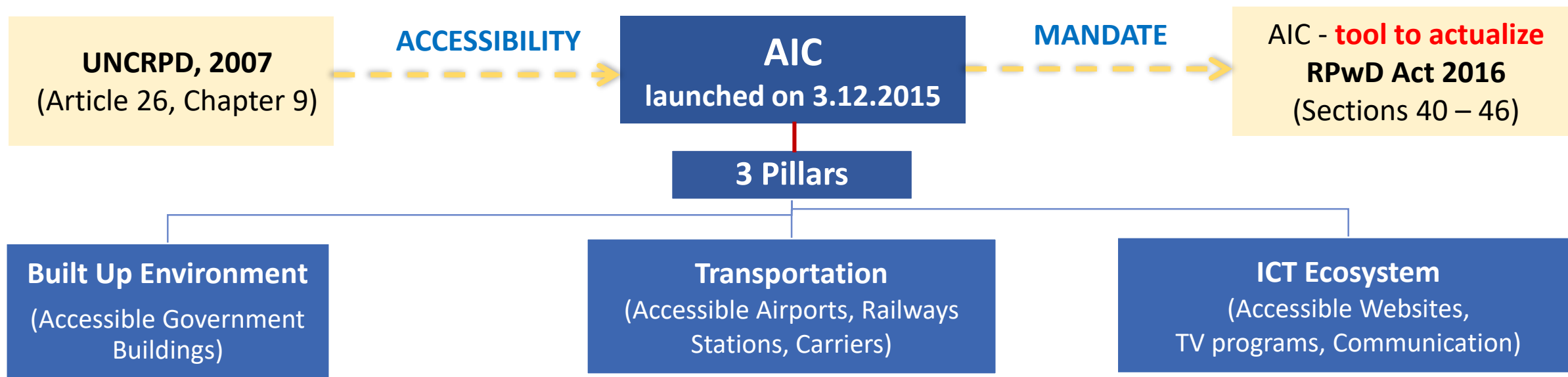
E-Comic-cum-Activity  
Book: An Introduction  
to Accessibility

24 August 2021

# Accessible India Campaign (AIC)



- Launched on 3<sup>rd</sup> December 2015, by Hon'ble Prime Minister.
- Based on the Social Model of Disability which says disability is caused by the way society is organized and not by the person's limitations of impairments.
- AIC envisages a barrier-free environment that aims an independent, self - reliant and dignified way of life for PwDs.



# Rights for Persons with Disabilities Act, 2016



**The Rights for Persons with Disabilities Act, 2016 (RPwD Act) mandates accessibility under Sections 40-46**



## Section 40

Formulation of **rules laying down standards** of accessibility in all 3 components in URBAN and RURAL areas



## Sections 41 to 43

**Provide facilities** for access to transport, ICT, universally designed consumer products



## Section 44

Ensure **mandatory observance** of the Accessibility Law as per laid down Standards (Sec 40)

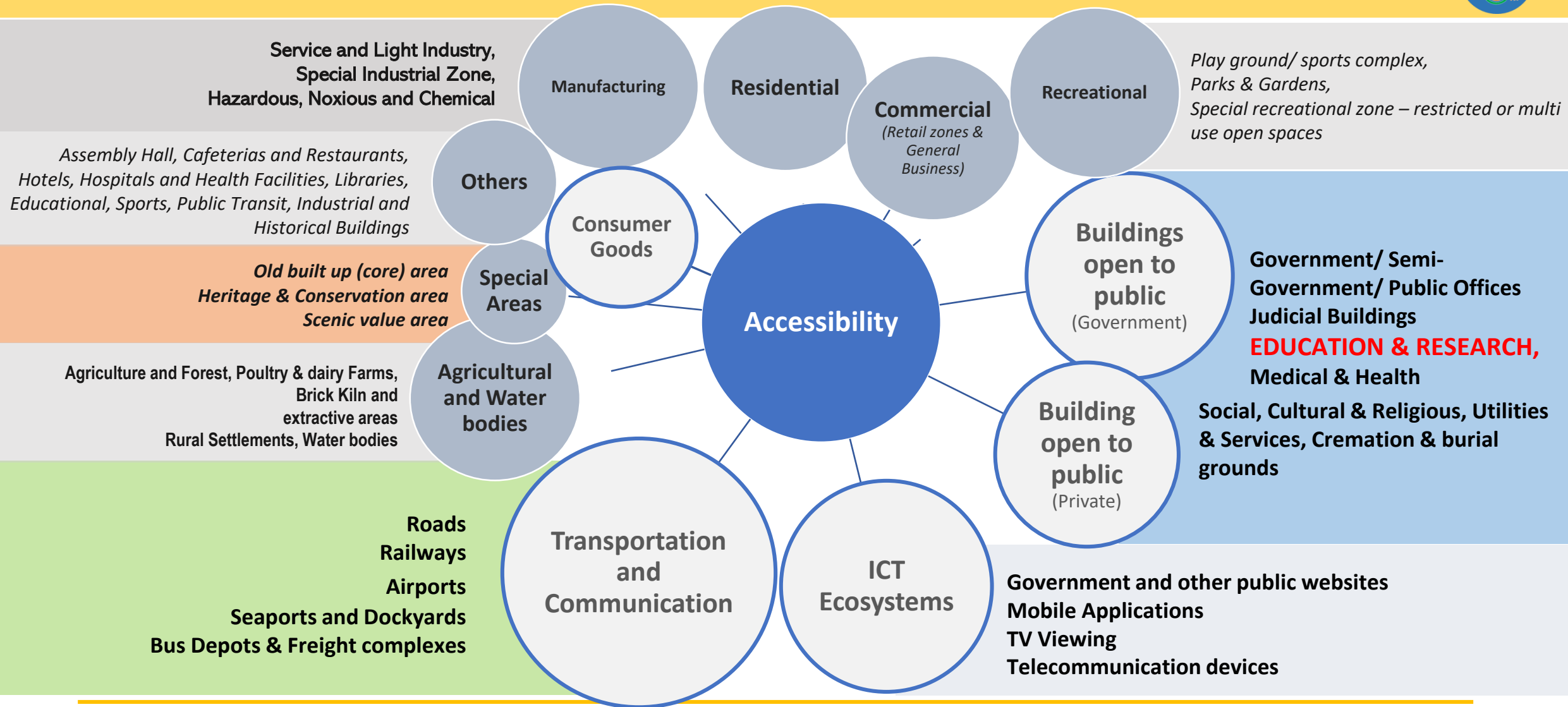


## Sections 45 and 46

**Time Limit** for making existing infrastructure/services accessible – Buildings (5 years) and Services (2 years)

**Section 16 and 17** – provides for appropriate Government and the local authorities to ensure that all educational institutions funded or recognised by them provide **inclusive education** to the children with disabilities, through non-discrimination, creation of accessible campuses and facilities, development of resource centres, etc.

# Coverage of Accessibility



# 'Public Building' Defined

---



“**PUBLIC BUILDING**” means a Government or private building, used or accessed by the public at large, including a **building used for educational or vocational purposes**, workplace, commercial activities, public utilities, religious, cultural, leisure or recreational activities, medical or health services, law enforcement agencies, reformatories or judicial foras, railway stations or platforms, roadways bus stands or terminus, airports or waterways.

- Section 2(w), RPwD Act, 2016



# Diverse Sectors working towards Accessibility



Housing and  
Urban Affairs



Law and Justice



Education

Railways



Home Affairs



Drinking Water  
and Sanitation



Civil Aviation



Sports



Road Transport  
and Highways



Tourism and  
Culture



Health



Information  
Technology and  
Broadcasting



# Endeavours made in the School Education Sector

---



**Provision of Accessibility in Educational Infrastructure** - For the existing Schools under the administration of DoSEL, to ensure barrier free access for Children with Disabilities in government and government aided schools, 8,33,703 out of 11,68,292 (71%) schools have been made barrier free with the provision of ramps and handrails.

**Course Content for Students with Special Needs/Disabilities** - Content on accessibility has been integrated by NCERT in Classes 1 to 12 and B.Ed syllabi and by some State Boards. Under the Samagra Shiksha Abhiyan being implemented for in-service training of teachers, and training for special educators, etc.

# Endeavours made in the Education Sector



**Standards/Guidelines of Accessibility** - Standards/ Guidelines for School Education and Higher Education under preparation in consultation with the Office of the Chief Commissioner of Persons with Disabilities. Holistic Standards/Guidelines to include:



## Physical environments

- Classrooms
- Corridors
- Washroom
- Drinking water points
- Staircases
- Ramps
- Library,
- Stage as well as Green Rooms
- Assembly Halls
- Playgrounds
- Laboratories
- Hostel, etc.
- Signage.



## Processes

- Enrolment of Children with Special Needs
- Appointment of specially trained teachers
- Development of accessible syllabus course content and pedagogy for inclusive education
- Affiliation criteria to include accessibility.
- Learning tools and devices



## Associated Services

- Transportation and transfer of CWSNs
- Information documentation and accessible information dissemination through websites/uploaded documents, e.g- scholarship applications, etc.
- Medical assistance
- Disbursal of books/uniforms
- Canteens or mid day meals
- Sign Language Interpretation



# Sugamya Bharat App



In order to convert the Campaign into a mass movement and for *Jan-Bhagidhari* the Hon'ble Prime Minister himself directed that a Crowdsourcing App be developed so that *Divyangjan* can raise issues of inaccessibility being faced by them anywhere in India.

The main beneficiaries include - Divyangjan, the Elderly, Pregnant Women, Children, Temporary Disabled owing to illness, surgery, etc.

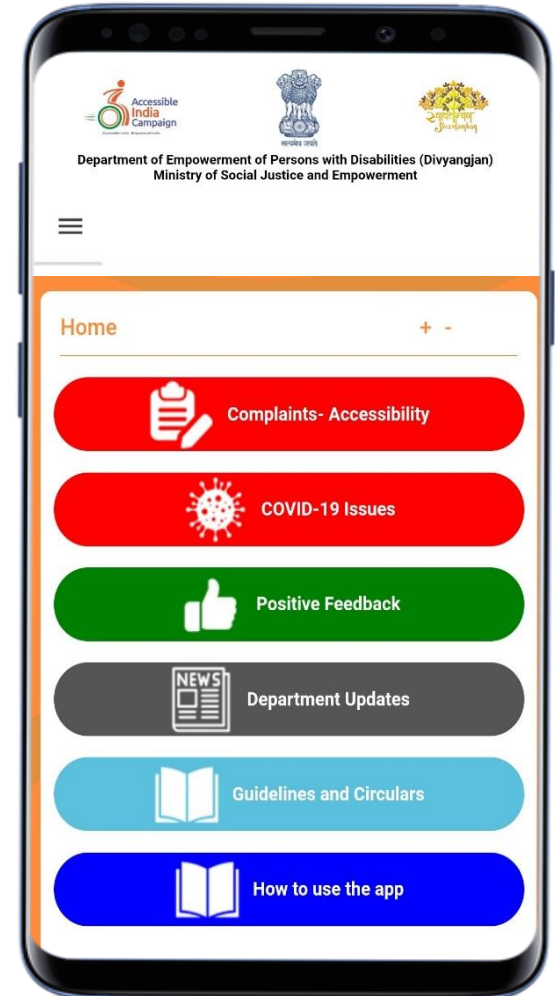
The App launched on 2<sup>nd</sup> March 2021, is useable by 'Anyone-Anywhere-Anytime' to raise issues related to accessibility across all 3 verticals of the Campaign.

## USER-FRIENDLY FEATURES:

- Easy registration
- Accessible dropdown menus
- Options for 10 languages
- Geotagging of photographs and location
- Demonstration videos in Hindi and English
- Pop-up feature for descriptions/information
- Complainant kept informed of status through alerts

## ACCESSIBLE FEATURES:

- Text to speech
- Font size adjustment
- Colour contrasting options
- Compatibility with Android and iOS accessibility modes.



# ACCESS – The Photo Digest Series



OCTOBER 2020  
PUBLIC CENTRIC BUILDINGS EDITION ON

## DEMYSTIFYING ACCESSIBILITY IN BUILT INFRASTRUCTURE

**ACCESS**  
THE PHOTO-DIGEST

## 1 ACCESSIBLE ROUTE

Clause 5.5, Harmonised Guidelines  
Clause B 2.2, Chapter 13, Part 3, NBC Vol. 1

Graphic reference source: National Building Code Part 3, Chapter 13

Continuous, obstruction free and safe, 9ft - 6ft wide route with colour contrasted tactile path leading up to the entrance of building and connecting all important accessibility features in the premise.

Informational and directional signage to be provided.

Obstructive items used to create level tactile tiles, guiding or if, pathway ends abruptly.

Plants, parking etc. placed appropriately.

Pathway/narrow, less than 1500mm (5ft).

The tactile path is designed with warning tiles to mark the nodes and junctions along the walkway.

Wheelchair user or a person with disability?

Individual with intellectual impairment?

## Status of Work

### 1st Edition – Public Centric Buildings

### 2nd Edition – Airports

NOVEMBER 2020  
AIRPORTS EDITION ON

## DEMYSTIFYING ACCESSIBILITY IN CIVIL AVIATION

reference source: National Building Code Part 3, Chapter 13

Department of Empowerment of Persons with Disabilities  
Ministry of Social Justice and Empowerment  
Government of India

**ACCESS**  
THE PHOTO-DIGEST

Level parking of size 6.5ft x 2ft, with 4ft transfer bay, within 100ft of the building. Connected to the accessible route. Signage on ground and on ground signage mandatory.

PwOs and if provided, not located.

Signage on ground, vertical post not prominent.

Signage and boarding of wheelchair constructed accessible route.

of Accessibility, marked on ground and provided on a sign post.

BE AN ACCESSIBILITY WARRIOR  
EVALUATE YOUR SURROUNDING FOR ACCESSIBILITY

- Have there been any steps to enhance accessibility?
- Are there any parking spaces for wheelchair users or transfer bays?
- Are there any ramps or stairs accessible to wheelchair users?
- Are there any signs or directional indicators for wheelchair users?
- Are there any other facilities or services available for wheelchair users?

# Basic Features of Accessibility



Features	Specifications
<b>OUTDOOR FEATURES</b>	
<b>Accessible Route/ Pathway</b>	900mm - 1800mm, anti-skid surface, tactile path, signage (directional and informational), well lit, unobstructed pathway.
<b>Accessible Parking</b>	5000mm X 3600mm, within 30m of entrance, transfer bay, connected to accessible route, vertical and on floor signage.
<b>Accessible Entrance to the Building</b>	900 - 1800mm width, ramp with gradient 1:12 and double height handrail with proper grips rounded at the edges, anti-skid flooring, colour contrast, main door to be provided with minimum width of 1000 mm, signage prominently displayed.
<b>INDOOR FEATURES</b>	
<b>Accessible Corridor</b>	1500mm to 1800mm clear width, anti-skid surface, tactile path, well-lit, unobstructed by chairs/plants, doors should not open on to corridors.
<b>Accessible Reception</b>	Low height counter (750-800mm) with 750-900mm width and leg space of 800mm height and 480 mm depth below the counter, information of accessible features, alternative media for communication - induction loop, braille, audio, etc.
<b>Accessible Lifts/ Elevator</b>	900 mm wide door with warning tiles at the entrance, 1500mm X 1500mm lift car size, braille buttons, auditory information and digital display, grab bars on three sides, alarm button, mirror on rear wall.
<b>Accessible Toilet</b>	2000mm X 2200mm size, grab-bars around all sanitary fittings easy to be used by left and right handed users, 900mm door (double swing or outside opening), anti-skid floor, emergency button, latches (also middle, base), easy to operate handles and lever type taps with long neck, no chaukhat.
<b>Accessible Staircase</b>	Colour contrasting strips on the horizontal surface of the steps, double height rounded handrails (38mm to 45mm diameter) with proper grips rounded at the edges, warning tactile tiles at beginning and end, 50mm gap between wall and handrail for proper grip.
<b>Accessible Drinking Water Facility</b>	Low height counter (750-800mm), leg space below counter (300mm), ramps, no open drains/ holes below the water points, double height fountain type taps that are easy to operate.
<b>Signage</b>	Directional and informational, high contrast, easy to understand, prominent locations, unobstructed, standardized and in alternative formats such as in braille, through audio output, tactile maps/boards, regional languages, etc, material of the signage should be anti-glare or preferably of matte finish, of durable quality.



# Accessible Route



Wide access, continuous guiding tactile path up to entrance

- Minimum width for pathway should be 1500mm (5ft) for one wheelchair and 1800mm (6ft) for two wheelchairs to cross simultaneously.
- Obstacles, projections or other protrusions should be avoided.
- The route connecting the entire building should be well lit and provided with high contrast tactile floor guidance path, connecting all public utilities, entrances and exits.
- Informational and directional signage to be provided.

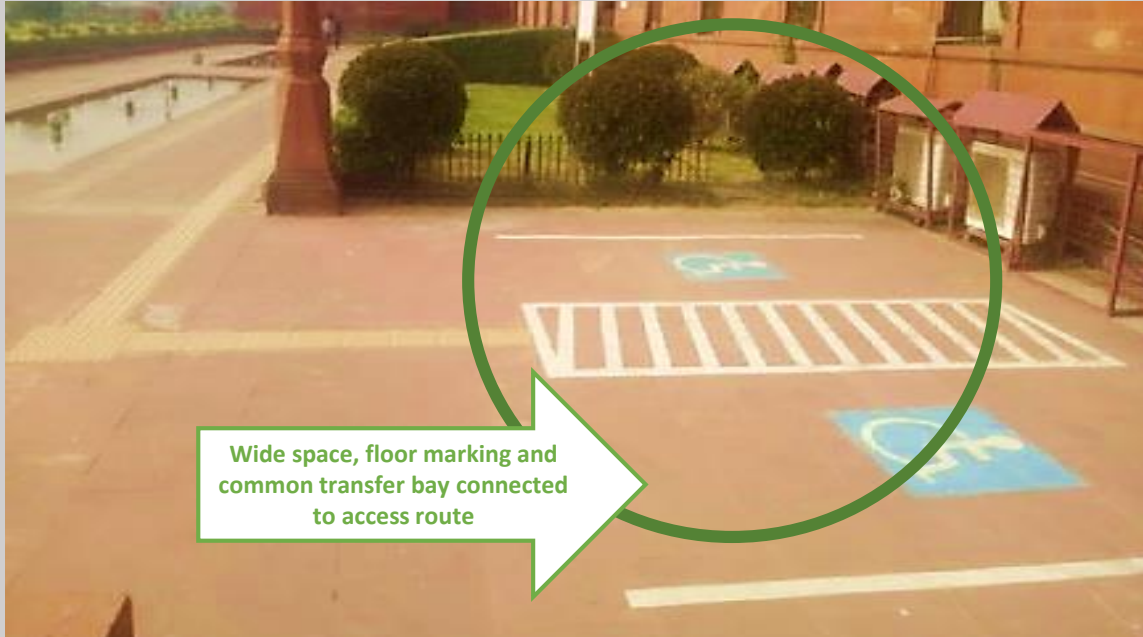
# Accessible Route



Only differently coloured tiles used to create pathway but actual tactile tiles, guiding or warning not used, pathway ends abruptly

- Path obstructed by landscaping, manholes, potted plants, parking etc.
- Tactile path provided is not continuous or not designed appropriately.
- Warning and guiding tiles not provided or wrongly placed.
- Provision for lighting the pathway not considered.
- Pathway/Route created for wheelchair movement is narrow, less than 1500mm (5ft).

# Accessible Parking



Wide space, floor marking and common transfer bay connected to access route

- Parking must have minimum dimensions of 5000 mm×3600 mm. (16.5ftX12ft) located nearest to an accessible entrance or lift lobby within 30m (100ft).
- A transfer bay 1200mm (4ft) wide is required for transfer of wheelchair users, which must be connected to the accessible route.
- Accessible parking lot should be identifiable by the International Symbol of Accessibility, marked on ground and provided on a sign post.

# Accessible Parking



Narrow parking at non conspicuous, location not designed as per standards, and without any accessible route

- No reserved parking provided for PwDs and if provided, not located near the entrance.
- Signage not as per standard – Missing ground marking, vertical post not provided, signage provided is not prominent.
- No transfer bay provided for alighting and boarding of wheelchair users or not connected to an unobstructed accessible route.



# Accessible Entrance



Gentle slope starting with warning tiles,  
double height rounded handrails

- Minimum 1200mm (4ft) wide unobstructed ramped entrance/approach of gradient 1:12, with stairs and minimum 1000mm (3.3ft) wide door.
- Ramp must have continuous rounded double height handrails (760mm(2.5ft) and 900mm(3ft)) on both sides; may also be provided with Braille indicators marking start and end of ramp, on the handrails.
- Warning tiles at start and end, non-slippery flooring, landing and signage is mandatory.

# Accessible Entrance



Slippery steep ramp without any  
warning tiles or handrails,  
obstructed

- No ramp provided and if provided, designed very steep, narrow or slippery.
- Handrails not provided or not as per standard design
- Ramp not accentuated with warning tiles, braille indicators or signage.
- Ramp obstructed by landscaping, protruding objects, parking etc.



# Accessible Reception



Low height counter with some leg space, for easy access by wheelchair users

- Reception or information desks made accessible by providing low (counter top at 800mm (2.75ft) or double height counter with prominent signage. Minimum unobstructed space of 900mmX1200mm (3ftX4ft) before counter, leg space of 800mm (2.75ft) height below counter and maximum counter depth upto 480mm(1.6ft).
- Alternative media for communication - induction loop, braille, audio etc.
- Information of accessible facilities in building to be made available.
- Staff to be sensitized.

# Accessible Reception



Narrow counter provided without leg space for wheelchair users, signage not prominent and not in easily recognizable format

- No accessible reception/ counter provided or created inside small room.
- Leg space not provided below the counter or counter top too deep.
- Information on accessible features not available or limited information available.
- Information not available in alternative formats.
- Signage not displayed prominently.

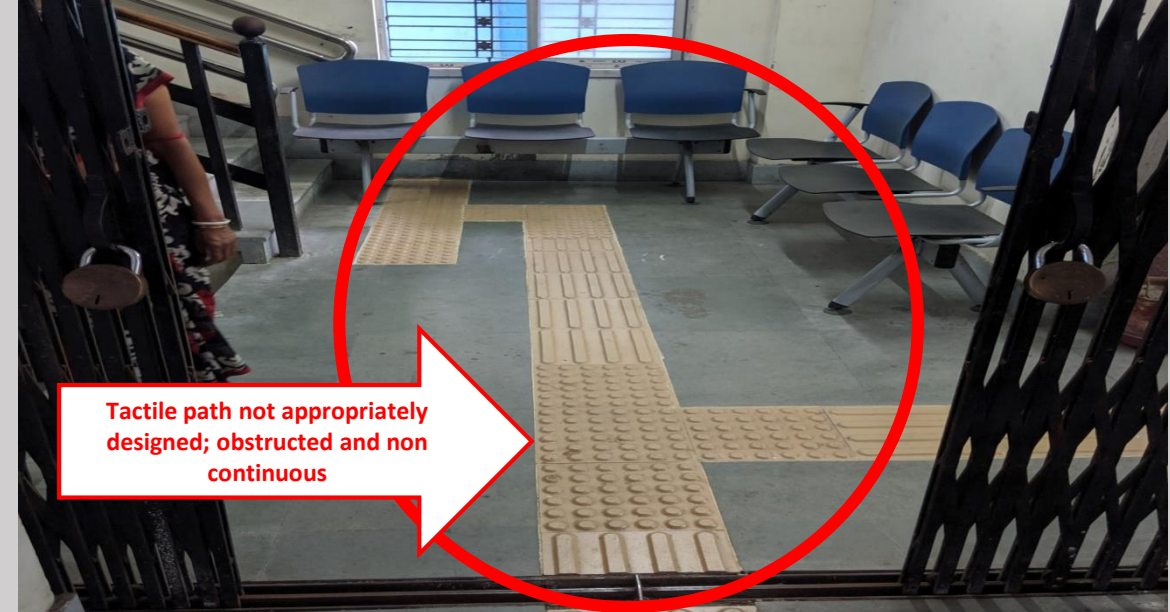
# Accessible Corridors



Continuous tactile path as well as double height railings

- Clear width of 1500mm to 1800mm (5ft to 6ft) to be maintained throughout with anti skid flooring and well contrasted tactile path.
- Illumination level should be maintained at 150 lux; no glare but well lit.
- Should be supported by directional and informational signage.
- Double height rounded handrail to be kept continuous as much as possible.
- Room doors should not open outside on to the corridors.

# Accessible Corridors



Tactile path not appropriately designed; obstructed and non continuous

- Clear unobstructed width of 1500mm to 1800mm (5ft to 6ft) not maintained.
- Anti skid flooring or tactile path not provided. Flooring not well contrasted.
- Not kept free of obstacles like - plantation, seating arrangements etc.
- Dimly lit and or dark corridor/spaces.
- Tactile guiding tiles not fixed in the direction of movement.



# Accessible Elevators



- Minimum internal car size should be 1500mmX1500mm (5ftX5ft), possibly 13 passenger capacity lift with grab bars at 900mm(3ft) height. Minimum door width to be maintained as 900 mm (3ft).
- Mandatory accessible accessories such as Braille buttons, auditory announcement systems and digital display, alarm button, emergency brake, rear mirror and other operating mechanisms (control panels) to be provided at an accessible height of 650mm (2.15ft) to 800mm (2.3ft).
- Signage and warning tactile tiles must be provided outside the lifts.

# Accessible Elevators



- Lift size is not adequate (even for single wheelchair) or door is not wide enough.
- Accessible accessories, grab bars, braille buttons, auditory systems, mirror, alarm button not provided or placed at inaccessible reach or vision range.
- Warning tactile tiles not (or wrongly) provided in front of the lift door opening.

# Accessible Staircases



Colour contrasting strips and double height rounded handrails provided on both sides

- Staircase with regular steps of tread (width) 250mm (9ft) and rise (height) 150mm (4.5ft) with colour contrasting strips (glow in the dark, retroreflective kinds) on the flat edge.
- The stair lobby must be well lit.
- Warning tiles or Braille indicators on handrails to mark start and end.
- The staircase has to be provided with continuous rounded double height handrails (760mm (2.5ft) & 900mm (3ft)) on both sides. The diameter of handrail to be 38-45mm and a gap of 50mm to be kept from the wall.

# Accessible Staircases



No colour contrasting strips provided, handrails not as per standards, warning tiles not provided

- Irregular or higher or narrow steps provided.
- Colour contrasting strips are not provided or placed on the vertical surface, thus not visible, or wrong design and colour and non – reflective.
- Many a times edges are left sharp or broken.
- Handrails not designed as per standard or not provided on both sides or placed too close to the wall leaving no space for proper grip.
- Warning tiles not provided.



# Accessible Toilets



Foldable handrails for both right and left hand use, alarm button

- **Minimum toilet dimension should be 2000mm X 2200mm (6.5ft X 7.3ft), sufficient for wheelchair manoeuvrability.**
- **Floor Finish** - Toilet to be provided with well contrasted, anti skid flooring, with proper drainage and no threshold (*choukhat*).
- Toilet door must be of minimum 900mm (3ft) wide. Latches to be placed at top, middle and bottom, with an easy-use mechanism which may be operated by foot also. The door handles must be of D-type or lever type, instead of knobs.
- **Accessories/Fittings -**
  - **Taps to be provided with sufficiently long necks and easy to use lever type operating mechanism**
  - WC top height should be at 450mm to 480mm (approx. 1.5ft)
  - Washbasin top height must be 750mm to 800mm (approx. 2.5ft)
  - **Grab bars/ door handles/ all fittings/ accessories/ operable items placed at approachable height of 300mm to 1000mm (1ft to 3.3ft) from the floor and be easy to operate (Long/lever handles of taps)**
  - **Enough grab bars which must have adequate strength to bear weight upto 250 Kgs.**
  - **Emergency buttons at 300mm (1ft) from the floor (preferably on 3 walls)**
  - **Mirror may be placed at an angle for convenience of wheelchair users.**
  - **The toilet must be well lit.**

# Accessible Toilets



- Toilet dimension is not sufficient for wheelchair manoeuvrability.
- Approach to the toilet door if provided by means of a ramp, is often kept narrow, slippery and too steep without a proper landing.
- Entry at door not levelled or provided with *chaukhat*.
- Door design makes operating the wheelchair difficult or the door opening is too narrow for a wheelchair.
- Grab bars not provided, and if provided, not as per standard design/strength.
- Latches difficult to use.
- Handles are knob types which are difficult to use.
- Lever type taps with long necks not provided.
- No emergency buttons and if provided not functional.
- The toilet is not well lit and ventilated.
- Anti-skid flooring not provided.
- Cleanliness/leakages inside toilet making it slippery and hence dangerous especially for persons with disabilities.



## Accessible Drinking Water Facility



- Drinking water facility area should have clear space of 900mm X 1200mm (3ftX4ft) in front of the fountain for a wheelchair, kept dry, anti skid and well drained by means of covered drainage.
- Basin must have double heights (700mm (2.3ft) to 900 mm(3ft)) with leg space of 300mm(1ft) to 680mm(2.1ft) below the counter.
- The taps must be lever or fountain type with easy to use operating systems and long neck for maximum reach to wheelchair user. Foot operability may be provided.

## Accessible Drinking Water Facility



- Conventional water coolers placed on platforms, kept inside cage or placed at end of narrow passages without any leg room or turning space. Slippery surfaces to be avoided.
- Taps neither provided at two levels nor with fountain or lever type design making it difficult to be used.
- Open drains, jaali over drains or *chaukhat* not to be provided as it causes hindrance to movement of wheelchair users and persons with visual impairment with or without canes.

# Signage



- Signage to follow standard design, be well contrasted with background and have simple layout while being eye-catching.
- Positioning to be planned considering the requirements of the visually impaired. Must also be prominently located and well lit so that it is visible even from a distance.
- Alternative formats – Information should be given not just in text but as pictograms, symbols, infographics and, through alternative media such as braille, audio, digital display, tactile maps and models etc.
- Lighting, material and finish to enhance visibility and ease of viewing.

# Signage



- Signage design is not standardized and different themes are used all around a premise. Often size not maintained making it unreadable.
- Signage visibility either obstructed or affected due to distance.
- Not well lit and material used is highly reflective causing glare and difficulty in reading.
- Colour contrast is not provided as per standard, hence does not serve the purpose.



# E-Comic and Activity Book – 'Priya - The Accessibility Warrior'



**1** First day of school after summer vacations ...

Mummy, what is AK-SE-SI-BE-LI-TY?

ACCESSIBILITY, Beta. It means to be able to reach or obtain easily. It helps make things easier to use or do.

Hi-mum... But Mamma, how will I move around in school? I don't want to gooooo...

Don't worry, Priya. This letter came from your school. Your school has been made accessible by providing ramps, lifts, signboards, handrails, tactile paths ...

WAIT !! TAC - what path?

TACTILE PATHS

Have you seen yellow or grey bumps on roads and sidewalks. These help people who cannot see to move around safely. These are called TACTILE PATHS.

where they meet their teacher...

PLACES FOR SIGN BUSES FOR THE BLINDS in books like a sign?

Like the Sign Language on TV for those who cannot hear.

Like Dad's hearing aid makes listening easier for her. For news on TV, the person in the small window there, uses Sign Language to communicate with persons who cannot hear. Similarly, the lift makes it easier for 'Dadaji to go upstairs. Features like these make our surroundings ACCESSIBLE.

Before Priya's mother could complete, Dadaji arrived ...

Priya... sorry, but we cannot be late on the first day of school...

Priya, more about accessibility when you are back from school and please be careful.

Don't worry, Auntji! Priya is in safe hands.

TACTILE PATHS

ELECTRONIC DISPLAY

SCHOOL 7:30

Smart school! This screen shows when the school starts. I have to get up early and come.

Some have read the school.

Smart school! This screen shows when the school starts. I have to get up early and come.

Some have read the school.

DID YOU KNOW???

ACCESSIBILITY HELPS EVERYONE.

Women or those with babies, sick or injured persons, as well as benefitted if their surroundings are made accessible. Accessibility participants and live independently as well as safely.

7 जैसे ही सिग्नल का टिकना शुरू, पिता और पिता ने जवाब की टिक। पिता का जवाब अगले टिकन के साथ टिकना शुरू हो गया।

हाय माया!

हे मुमू पापा! पुराने दिनों के बाद टिकना अलग अलग जगह आने के लिए शुरू किया।

मैंने भी कुछ देना किया। सिग्नल शुरू होने से कुछ सेकंड पहले मुझे जवाब देना शुरू करने के लिए प्रेरित करने का काम है।

अपने के अलावा पापा भी अपना हाथ भी बंद करके देना शुरू करेंगे और टिकना भी बंद करके देना शुरू करेंगे।

8 टिकनी 10 टिकनाओं का टिकना करने वाली के लिए एक जवाब देना है। यह जवाब देना है। टिकनी टिकनाओं के अंतराल में टिकनी के लिए 'टिक-टिक' देना है। टिकनी के लिए एक जवाब देना है। और टिकनी के लिए एक जवाब देना है।

हे मुमू पापा! पुराने दिनों के बाद टिकना अलग अलग जगह आने के लिए शुरू किया।

मैंने भी कुछ देना किया। सिग्नल शुरू होने से कुछ सेकंड पहले मुझे जवाब देना शुरू करने के लिए प्रेरित करने का काम है।

अपने के अलावा पापा भी अपना हाथ भी बंद करके देना शुरू करेंगे और टिकना भी बंद करके देना शुरू करेंगे।

9 टिकनी टिकनी के अलावा पापा भी अपना हाथ भी बंद करके देना शुरू करेंगे और टिकना भी बंद करके देना शुरू करेंगे।

हे मुमू पापा! पुराने दिनों के बाद टिकना अलग अलग जगह आने के लिए शुरू किया।

मैंने भी कुछ देना किया। सिग्नल शुरू होने से कुछ सेकंड पहले मुझे जवाब देना शुरू करने के लिए प्रेरित करने का काम है।

अपने के अलावा पापा भी अपना हाथ भी बंद करके देना शुरू करेंगे और टिकना भी बंद करके देना शुरू करेंगे।

10 टिकनी टिकनी के अलावा पापा भी अपना हाथ भी बंद करके देना शुरू करेंगे और टिकना भी बंद करके देना शुरू करेंगे।

हे मुमू पापा! पुराने दिनों के बाद टिकना अलग अलग जगह आने के लिए शुरू किया।

मैंने भी कुछ देना किया। सिग्नल शुरू होने से कुछ सेकंड पहले मुझे जवाब देना शुरू करने के लिए प्रेरित करने का काम है।

अपने के अलावा पापा भी अपना हाथ भी बंद करके देना शुरू करेंगे और टिकना भी बंद करके देना शुरू करेंगे।



# E-Comic and Activity Book – Learning Through Fun Activities



## Interactive Activities on Accessibility

- ACTIVITY 1: Help Me!!
- ACTIVITY 2: Fill Them Up!!
- ACTIVITY 3: Choose the Correct Accessibility Option
- ACTIVITY 4: Accessibility Warrior Badge
- ACTIVITY 5: Let's Explore Website Accessibility Features
- ACTIVITY 6: Accessibility in Daily Life
- ACTIVITY 7: Learn Sign Language
- ACTIVITY 8: Learn Braille!!
- ACTIVITY 9: Accessibility Symbols

Guide Grandpa by dragging & dropping his image at the correct accessibility feature.

Ramp for easier climb (up/down) | Use lift for comfortable travel | Tactile Path

Grandpa wants to go down to the park but his legs are wobbly.

Check | Back | Next

Click on the '+' sign for learning more about each feature of web accessibility



Click for ISL Video



## Learn Braille

Click for ISL Video

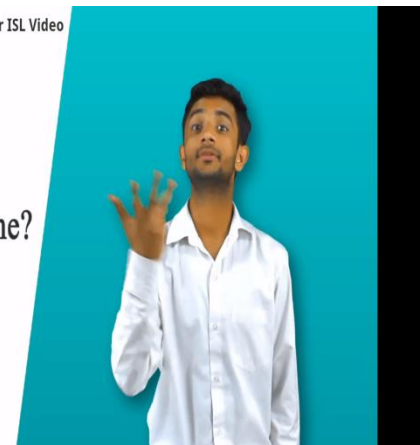
a	b	c	d	e	f	g	h	i	1	2	3	4	5
j	k	l	m	n	o	p	q	r	6	7	8	9	0
s	t	u	v	w	x	y	z						

Back | Next



Click for ISL Video

What is your name?



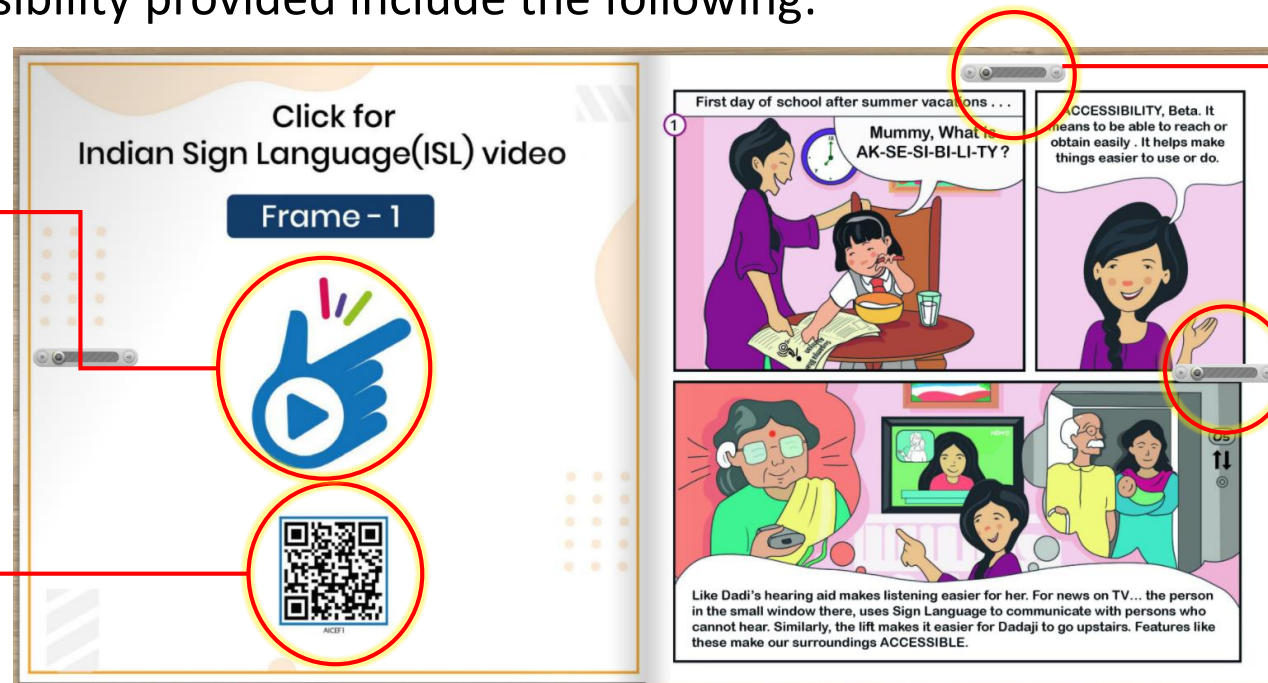
# About the E-Comic and Activity Book



- Objective is to **ingrain the significance of accessibility in children right from their formative years** and to provide the desired push towards ensuring accessibility across the education sector.
- The E-Book is made in an interactive and fully accessible format **to explain the complex concept of accessibility in a simple to understand and attractive manner.**
- Features of Accessibility provided include the following:

**Indian Sign Language Video:** Click on the sign to access Indian Sign Language video describing the scenes

**QR Code based output:** To be scanned using mobile devices for quick access to the ISL Video and Audio Description of scenes



**Audio Descriptions:** Each scene of each frame on a page as well as the navigation controls (next page, previous page, etc.) is described through dramatized voice overs which could be accessed by just clicking on the play buttons on the page.



Trigger for the Comic



Trigger for the Activities

**Happy Learning About Accessibility and  
Making India Universally Accessible**

**Thank you, Accessibility warriors.**